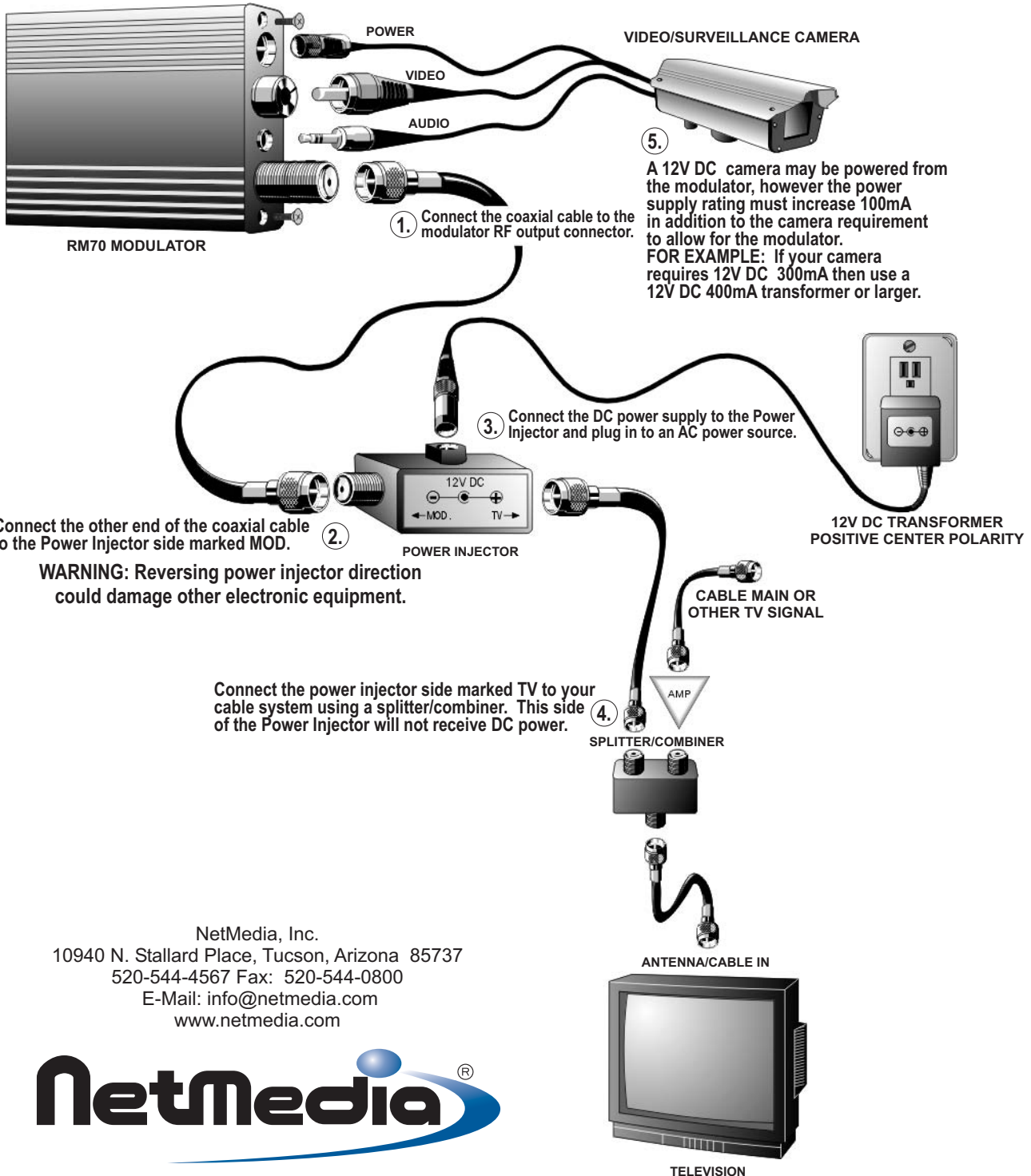


Connecting the RM70 Coax-Powered™ Modulator

The RM70 uses a Power Injector which allows it to be powered remotely through the coaxial cable. The modulator may also power a 12V DC video or surveillance camera.

WARNING: Improper installation may damage electronic equipment. Please follow the power connection steps below in the proper sequence.



NetMedia, Inc.
 10940 N. Stallard Place, Tucson, Arizona 85737
 520-544-4567 Fax: 520-544-0800
 E-Mail: info@netmedia.com
 www.netmedia.com



Programming the RM70 Coax-Powered™ Modulator

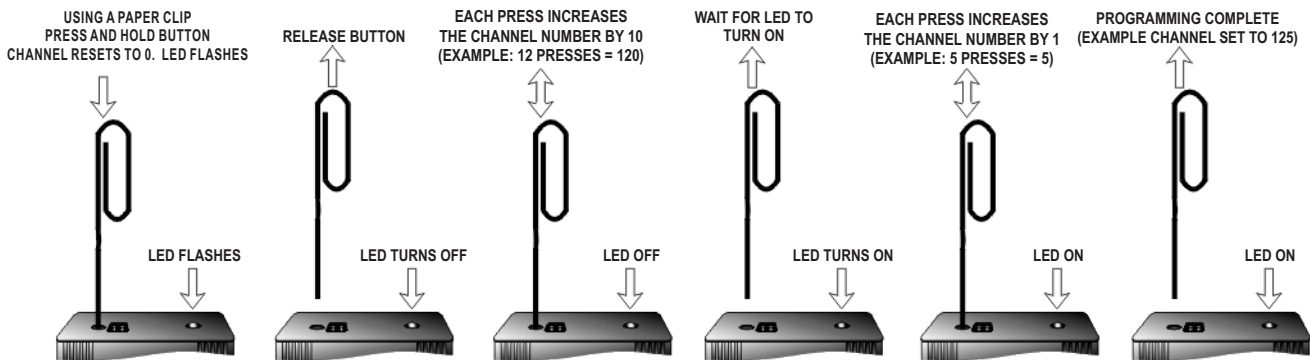
SETTING THE RM70 CHANNELS (UHF 14-69, CABLE 70-94, 100-125)

Please read instructions completely before you begin. Each time you program or re-program a channel, you must start again from zero.

Decide what channel you wish to use. If combining with an antenna system, choose a UHF channel 14-69. If combining with cable, choose a CABLE channel 70-94, 100-125. Choose a channel that is not currently in use by any local broadcast, cable, or other modulated source. There must also be at least one blank channel separating each modulated channel from these other sources.

Programming: To program the RM70 using a paper clip, follow the instructions below. After the RM70 is programmed, a momentary push of the button displays a test pattern (two white vertical bars).

PROGRAMMING STEPS



MODULATING DSS/SATELLITE OVER YOUR CABLE SYSTEM

